

Main performances	Unit	Parameter	Remark
Pile			
Max. drilling diameter	mm	2000	①
Max. drilling depth	m	68/52	
Rotary drive			
Rated output torque	kN·m	235	
Rotation speed	rpm	5~32	
Crowd system			
Crowd force	kN	210	
Line pull	kN	270	
Stroke	mm	5000	
Main winch			
Lifting capacity	kN	235	
Wire rope diameter	mm	32	
Max. line speed	m/min	70	
Auxiliary winch			
Lifting capacity	kN	80	
Wire rope diameter	mm	20	
Max. line speed	m/min	70	
Mast inclination			
Forward/backward	°	5/90	
Lateral	°	±3	
Main Chassis			
Base engine	/	6UZ1	ISUZU
Engine power	kW/rpm	257/2000	
Exhaust emission	/	China Stage III	
Engine displacement	L	9.84	
Width retracted/extended	mm	3200-4500	
Track shoe width	mm	800	
Swing radius	mm	4360	
Overall machine			
Overall height	mm	22870	
Operating weight	t	81	
Transport width	mm	3540	
Transport height	mm	3660	
Transport length	mm	16385	

①: Friction kelly / inter-locking kelly

Kelly bar		Weight(kg)	Depth(m)	Option
Inter-locking kelly	Φ445×4×13	9900	44	Standard
	Φ445×4×14	10000	48	
	Φ445×4×15	10600	52	
Friction kelly	Φ445×5×14	10200	63	
	Φ445×5×15	10900	68	

Note: Drilling depth with bucket 1000 mm long



CLAY EXPERT AND FASTER

SR235 can be used in municipal and civil infrastructure construction. With the characteristics of high soil dumping speed, sensitive response and high construction efficiency, it is a best-selling model in this field.

Efficient construction: the bucket is free of clay sticking on, easy to dump debris; high power utilization rate, fast main winch speed, smooth compound action, and high comprehensive construction efficiency.

Strong power: the abundant power can be distributed in real time, improves the utilization rate, reduces fuel consumption and saves costs.

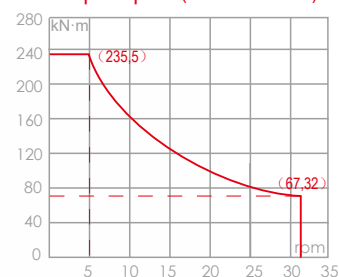
High reliability: the structure parts with high design standard has passed the strict system test; no crack and no deformation, reduce maintenance cost.

Single layer drum: single layer wire rope winding on main winch drum, no extrusion wear between the ropes, long service life, low cost.

Intelligent control: 10-inch HD touch screen, fast response time and more convenient for operation. With a smartphone APP EVI, it can realize remote real-time monitoring, one-click service call and group management.

Convenient maintenance: the external driving key of rotary drive facilitates maintenance and replacement; masthead lubrication points connected with outlet hoses to facilitate grease injection.

Torque-Speed(standard mode)



Torque-pressure(Rock drilling mode)

