

SMHC70

SANY Material Handling Machine

SMHC70 is a dual powered, mainly used in bulk material handling operations in inland ports, equipped with a large bucket shell grabber, a variety of boom options, a wide loading and unloading range, and is highly efficient.



▶ 1

High load

a single cycle of only costs 30 seconds, a single grab capacity reaches 6 tons, the average efficiency is twice higher than a 16-ton portal crane, easily covers 5000 tons of ship operations.

▶ 2

Light self weight:

little pressure on the dock, no need to lay track.

▶ 3

Excellent process:

bulk materials are unloaded and loaded directly, without the aid of funnel or loader.

▶ 4

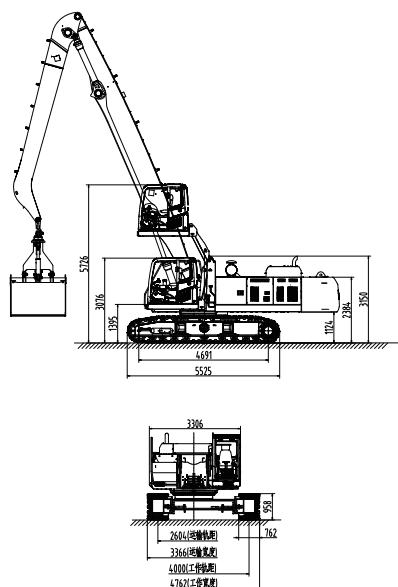
More flexible:

Grab clearance is more convenient.

► Product Parameters

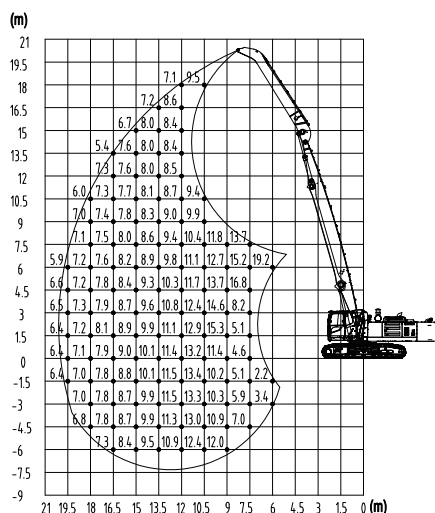
Technical Parameter					Configuration Parameter					
ITEM			UNIT	SMHC70	CONFIGURATION		UNIT	SMHC70		
Power System	Engine	Model	-	DCEC QSL8.9	Traveling Gear	Working Gauge	mm	4000		
		Rated power	kw/rpm	264/2100		Wheel Base	mm	4691		
		Torque	Nm/rpm	1900/1500		Track Width	mm	762		
		Emission	min	com III		Max. Travelling Speed	km/h	3		
		Oil Tank Capacity	L	600	Slewing Gear	Slewing Bearing	-	Sany		
				Max. Rotating Speed		rpm	8			
	E-Motor	Model	-	XEMC YE3-355M-4	Cabin	Cabin Lift Height	mm	2650		
		Rated Capacity	kW/rpm	250/1486	Basic Parameters	Boom Configuration	m	18	20	22
		Input voltage	V/Hz	380/ 50			m	Boom 10.5	Boom 12.5	Boom 12.5
		Type Of Start	-	Soft Start			m	Stick 7.5	Stick 7.5	Stick 10
Hydraulic System	Type Of Control		-	Electronically Controlled Positive Flow System		Max. Operating Radius	m	18	19.5	21
	Main Pump	Model	-	Engine connection pump: kawasaki E-motor connection pump: kawasaki		Max. Operating Height	m	16.5	18	19.5
		Rated Flow	L/min	While Using Engine: 2×400 While Using E-Motor: 2×416		Max. Operating Depth	m	-6	-6	-9
						Max. Operating Radius (Grab Not Included)	t	5.6	6.1	5.8
	Main Valve		-	Hengli						
	Reducer		-	Sany						
	Boom Cylinder		-	Sany						
	Stick Cylinder		-	Sany						
	Max. System Pressure		MPa	34.3						
	Hydraulic Oil Tank		L	500						

► Dimensions



► Scope Of Work

SMHC70 Lift capacities of material handler
(Boom 10.5m, Stick 7.5m, Unit:t)



SMHC70 Lift capacities of material handler
(Boom 12.5m, Stick10m, Unit:t)

