



Rotary Drilling Rig	Metric	Imperial
<b>Pile</b>		
Max. drilling diameter	2500 mm	98 in
Max. drilling depth ①	103/86 m	338/282 ft
<b>Rotary drive</b>		
Rated output torque	400 kN·m	295025 lbf·ft
Rotation speed	7~26 rpm	7~26 rpm
<b>Crowd system</b>		
Crowd force	405 kN	91048 lbf
Line pull	405 kN	91048 lbf
Stroke	9000/19000 mm	354/748 in
<b>Main winch</b>		
Lifting capacity	410 kN	92172 lbf
Wire rope diameter	36 mm	1.42 in
Max. line speed	66 m/min	217 ft/min
<b>Auxiliary winch</b>		
Lifting capacity	105 kN	23605 lbf
Wire rope diameter	20 mm	0.79 in
Max. line speed	80 m/min	262 ft/min
<b>Mast inclination</b>		
Forward/backward	90/15 °	90/15 °
Lateral	±3 °	±3 °
<b>Main chassis</b>		
Engine model	Cummins X15	Cummins X15
Engine power ISO 3046-1	391 kW/1800 rpm	524 HP/1800 rpm
Emission regulation	EEC 97/68 EC	EPA /CARB
	Stage V/Tier4 final	
Fuel tank capacity	600 L	159 US gal
AD Blue tank capacity	55 L	14.5 US gal
Width retracted/extended	3600-5000 mm	142-197 in
Track shoe width	900 mm	35 in
Swing radius	4900 mm	193 in
<b>Overall machine</b>		
Overall height	27430 mm	1080 in
Operating weight ②	137000 kg	302033 lb
Transport width	3600 mm	142 in
Transport height	3380 mm	133 in
Transport Length	19570 mm	770 in

①: Friction kelly / inter-locking kelly  
②: with standard kelly

Kelly bar		Weight	Depth	Option
Inter-locking kelly	Φ530×4×17	16100 kg 35494 lb	61 m 200 ft	Standard
	Φ530×4×18	16900 kg 37258 lb	65 m 213 ft	
	Φ530×4×19	17700 kg 39022 lb	69 m 226 ft	
	Φ530×5×19	18910 kg 41690 lb	86 m 282 ft	
	Φ530×6×17	17400 kg 38360 lb	91 m 299 ft	
	Φ530×6×18	18300 kg 40345 lb	97 m 328 ft	
	Φ530×6×19	19200 kg 42329 lb	103 m 338 ft	
	Φ530×6×19	19200 kg 42329 lb	103 m 338 ft	

Note: Drilling depth with bucket 1500 mm long

## INTELLIGENT CONTROL, EFFICIENT ROCK DRILLING

SR400M is a medium and large-sized winch crowded rotary drilling rig, featured with great rock drilling adaptability and low vibration. It can meet the requirements of long casing construction, and has excellent performance in housing construction and bridges.

**Strong adaptability:** ultra-long stroke winch crowd, realizing a faster conversion to any construction modes, can be matched with torque amplifier and automatic casing driver for long casing construction.

**High efficiency:** the rotary drive has sufficient torque and high crowd force, enables fast drilling and rock extraction; fast main winch line speed, and fast soil discharging speed; the engine with high continuous output power, and pump & valves ensures accurate control, fast and smooth compound action. The whole machine has high comprehensive construction efficiency to guarantee a quick return.

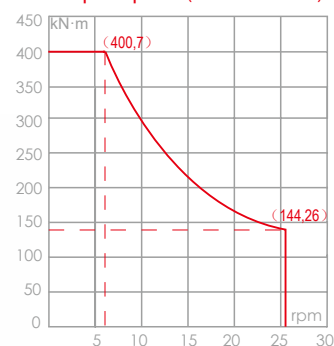
**Superior quality:** each key structural component undergoes the most stringent functional and performance tests, stable and reliable, long-lasting use without cracking faults; single-layer of main winch drum, ensures long service life of wire rope; no downtime, low cost.

**Easy to operate:** fully electric control system featured with fast response and precise control; configured with automation function, simplifying the operation and reducing the work intensity; a new generation of cabin, equipped with one-click startup button, electronic throttle knob, and convenient mechanical buttons, making it more convenient to operate.

**Easy to maintain:** stacked counterweight, convenient installation and removal, fast transferring; standard configuration of intelligent central lubrication system, time-saving and labor-saving; centralized filter arrangement, convenient replacement; left and right access ladders, full-sized catwalk, facilitating maintenance.

**Convenient transportation:** the center-mounted main winch can be transported in a single load with the base machine; foldable guardrail, and catwalk ensure the transport dimensions within limit; the cylinder-propelled pins on rotary drive and derricking mechanism facilitate removal and installation.

Torque-Speed (standard mode)



Torque-Pressure (rock drilling mode)

